



## TOKO

### RECESSED LUMINAIRE

Particularly in the fashion area, an ingenious mixture of coherent basic lighting and well-balanced accentuation is required. Here TOKO is just right, since this LED downlight performs both tasks with virtuosity. It is small and unobtrusive in its design. Its fresh light illuminates the room homogeneously as far as the very last corner. Thanks to the 3D faceted reflector and four beam angles, accents can also be systematically set with TOKO.



#### Four beam angles thanks to 3D faceted reflector

Homogeneous or accentuated illumination is very easy: Beam angles of 28°, 38°, 48° und 60°



#### Small dimensions

Ceiling cut-out only 130 mm, recessing depth only 100 mm



#### Well thought-out attachment

Innovative mounting spring for ease of attachment



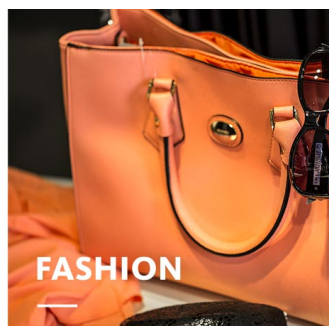
#### Large choice of LEDs

Six white light colours up to 4000 lm








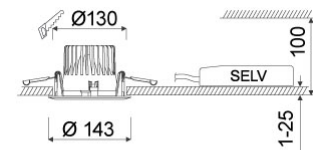
#### Intelligent lighting

LED<sup>IO</sup> for your smart lighting management



[www.oktalite.com/toko-r](http://www.oktalite.com/toko-r)

Type of luminaire	recessed luminaire
Application areas	base illumination
Pan/tilt range	fixed
Mounting	Okталite folding spring
Ceiling thickness	1 - 25 mm
Lighting technology	LED
LED Luminous Flux Class	2000 lm - 4000 lm
Light colour White	2700 K, 3000 K, 3000 K - Efficient White, 3000 K - Brilliant Colour, 3500 K, 4000 K
Cooling	passive
Supply unit	Driver separate
Luminaire colour	RAL 9005 jet black RAL 9006 white aluminium RAL 9016 traffic white Special colours on request
Surface	structure powder-coated
Nominal voltage	220 - 240 V, 50/60Hz
Lighting controls	on request
Weight	Approx. 0.6 kg
Components	 Luminaire housing  Supply unit
Test seal	  



Technical details as well as weight specifications and measurements have been prepared with care. Errors excepted. All dimensions in mm · LED service life data: L80/B10 at ambient temperature (ta) 25°C. Rated lamp service life 50,000h. Luminous flux and efficiency specifications are subject to a tolerance of +/- 10%. Min CRI Ra: >80 / >90· Product images are used as an example and may differ from the original · We reserve the right to make changes, insofar as they serve progress. The Single Lighting Regulation (SLR) documentation can be found in our download area. Okталite Lichttechnik GmbH · Mathias-Brüggen-Str. 73 · 50829 Cologne · T 49 221 59767-0 · F 49 221 59767-40 · mail@okталite.com · www.okталite.com · 2022-09-28



Beam angle

Medium Flood



LED Luminous Flux Class	Light colour	CRI R <sub>a</sub>	system luminous flux	System performance	Cover	Order number		
						white	silver	black
2000 lm	2700 K	81	1835 lm	13 W	clear	10222285	10222286	10222287
2000 lm	2700 K	81	1920 lm	13 W	without	10222213	10222214	10222215
2000 lm	3000 K	83	1885 lm	13 W	clear	10222288	10222289	10222290
2000 lm	3000 K	83	1970 lm	13 W	without	10222216	10222217	10222218
2000 lm	3000 K - Efficient White	94	2060 lm	17 W	clear	10222291	10222292	10222293
2000 lm	3000 K - Efficient White	94	2155 lm	17 W	without	10222219	10222220	10222221
2000 lm	3000 K - Brilliant Colour	97	1940 lm	21 W	clear	10222300	10222301	10222302
2000 lm	3000 K - Brilliant Colour	97	2030 lm	21 W	without	10222228	10222229	10222230
2000 lm	3500 K	84	1925 lm	13 W	clear	10222294	10222295	10222296
2000 lm	3500 K	84	2010 lm	13 W	without	10222222	10222223	10222224
2000 lm	4000 K	83	1985 lm	13 W	clear	10222297	10222298	10222299
2000 lm	4000 K	83	2080 lm	13 W	without	10222225	10222226	10222227
3000 lm	2700 K	81	2730 lm	21 W	clear	10222285	10222286	10222287
3000 lm	2700 K	81	2855 lm	21 W	without	10222213	10222214	10222215
3000 lm	3000 K	83	2805 lm	21 W	clear	10222288	10222289	10222290
3000 lm	3000 K	83	2935 lm	21 W	without	10222216	10222217	10222218
3000 lm	3000 K - Efficient White	94	2830 lm	25 W	clear	10222291	10222292	10222293
3000 lm	3000 K - Efficient White	94	2960 lm	25 W	without	10222219	10222220	10222221
3000 lm	3000 K - Brilliant Colour	97	2800 lm	32 W	clear	10222300	10222301	10222302
3000 lm	3000 K - Brilliant Colour	97	2930 lm	32 W	without	10222228	10222229	10222230
3000 lm	3500 K	84	2860 lm	21 W	clear	10222294	10222295	10222296
3000 lm	3500 K	84	2990 lm	21 W	without	10222222	10222223	10222224
3000 lm	4000 K	83	2955 lm	21 W	clear	10222297	10222298	10222299
3000 lm	4000 K	83	3090 lm	21 W	without	10222225	10222226	10222227
4000 lm	2700 K	81	3550 lm	28 W	clear	10222285	10222286	10222287
4000 lm	2700 K	81	3715 lm	28 W	without	10222213	10222214	10222215
4000 lm	3000 K	83	3650 lm	28 W	clear	10222288	10222289	10222290

Technical details as well as weight specifications and measurements have been prepared with care. Errors excepted. All dimensions in mm · LED service life data: L80/B10 at ambient temperature (ta) 25°C. Rated lamp service life 50,000h. Luminous flux and efficiency specifications are subject to a tolerance of +/- 10%. Min CRI Ra: >80 / >90· Product images are used as an example and may differ from the original · We reserve the right to make changes, insofar as they serve progress. The Single Lighting Regulation (SLR) documentation can be found in our download area. Oktalite Lichttechnik GmbH · Mathias-Brüggen-Str. 73 · 50829 Cologne · T 49 221 59767-0 · F 49 221 59767-40 · mail@oktalite.com · www.oktalite.com · 2022-09-28

4000 lm	3000 K	83	3820 lm	28 W	without	10222216	10222217	10222218
4000 lm	3000 K - Efficient White	94	3705 lm	34 W	clear	10222291	10222292	10222293
4000 lm	3000 K - Efficient White	94	3875 lm	34 W	without	10222219	10222220	10222221
4000 lm	3500 K	84	3725 lm	28 W	clear	10222294	10222295	10222296
4000 lm	3500 K	84	3895 lm	28 W	without	10222222	10222223	10222224
4000 lm	4000 K	83	3845 lm	28 W	clear	10222297	10222298	10222299
4000 lm	4000 K	83	4025 lm	28 W	without	10222225	10222226	10222227

Technical details as well as weight specifications and measurements have been prepared with care. Errors excepted. All dimensions in mm · LED service life data: L80/B10 at ambient temperature (ta) 25°C. Rated lamp service life 50,000h. Luminous flux and efficiency specifications are subject to a tolerance of +/- 10%. Min CRI Ra: >80 / >90 · Product images are used as an example and may differ from the original · We reserve the right to make changes, insofar as they serve progress. The Single Lighting Regulation (SLR) documentation can be found in our download area. Oktalite Lichttechnik GmbH · Mathias-Brüggen-Str. 73 · 50829 Cologne · T 49 221 59767-0 · F 49 221 59767-40 · mail@oktalite.com · www.oktalite.com · 2022-09-28



Beam angle

Flood



LED Luminous Flux Class	Light colour	CRI R <sub>a</sub>	system luminous flux	System performance	Cover	Order number		
						white	silver	black
2000 lm	2700 K	81	1840 lm	13 W	clear	10222303	10222304	10222305
2000 lm	2700 K	81	1920 lm	13 W	without	10222231	10222232	10222233
2000 lm	3000 K	83	1890 lm	13 W	clear	10222306	10222307	10222308
2000 lm	3000 K	83	1975 lm	13 W	without	10222234	10222235	10222236
2000 lm	3000 K - Efficient White	94	2065 lm	17 W	clear	10222309	10222310	10222311
2000 lm	3000 K - Efficient White	94	2160 lm	17 W	without	10222237	10222238	10222239
2000 lm	3000 K - Brilliant Colour	97	1945 lm	21 W	clear	10222318	10222319	10222320
2000 lm	3000 K - Brilliant Colour	97	2035 lm	21 W	without	10222246	10222247	10222248
2000 lm	3500 K	84	1930 lm	13 W	clear	10222312	10222313	10222314
2000 lm	3500 K	84	2015 lm	13 W	without	10222240	10222241	10222242
2000 lm	4000 K	83	1990 lm	13 W	clear	10222315	10222316	10222317
2000 lm	4000 K	83	2085 lm	13 W	without	10222243	10222244	10222245
3000 lm	2700 K	81	2735 lm	21 W	clear	10222303	10222304	10222305
3000 lm	2700 K	81	2860 lm	21 W	without	10222231	10222232	10222233
3000 lm	3000 K	83	2810 lm	21 W	clear	10222306	10222307	10222308
3000 lm	3000 K	83	2940 lm	21 W	without	10222234	10222235	10222236
3000 lm	3000 K - Efficient White	94	2840 lm	25 W	clear	10222309	10222310	10222311
3000 lm	3000 K - Efficient White	94	2970 lm	25 W	without	10222237	10222238	10222239
3000 lm	3000 K - Brilliant Colour	97	2805 lm	32 W	clear	10222318	10222319	10222320
3000 lm	3000 K - Brilliant Colour	97	2935 lm	32 W	without	10222246	10222247	10222248
3000 lm	3500 K	84	2865 lm	21 W	clear	10222312	10222313	10222314
3000 lm	3500 K	84	3000 lm	21 W	without	10222240	10222241	10222242
3000 lm	4000 K	83	2960 lm	21 W	clear	10222315	10222316	10222317
3000 lm	4000 K	83	3095 lm	21 W	without	10222243	10222244	10222245
4000 lm	2700 K	81	3560 lm	28 W	clear	10222303	10222304	10222305
4000 lm	2700 K	81	3720 lm	28 W	without	10222231	10222232	10222233
4000 lm	3000 K	83	3660 lm	28 W	clear	10222306	10222307	10222308

Technical details as well as weight specifications and measurements have been prepared with care. Errors excepted. All dimensions in mm · LED service life data: L80/B10 at ambient temperature (ta) 25°C. Rated lamp service life 50,000h. Luminous flux and efficiency specifications are subject to a tolerance of +/- 10%. Min CRI Ra: >80 / >90· Product images are used as an example and may differ from the original · We reserve the right to make changes, insofar as they serve progress. The Single Lighting Regulation (SLR) documentation can be found in our download area. Oktalite Lichttechnik GmbH · Mathias-Brüggen-Str. 73 · 50829 Cologne · T 49 221 59767-0 · F 49 221 59767-40 · mail@oktalite.com · www.oktalite.com · 2022-09-28

4000 lm	3000 K	83	3825 lm	28 W	without	10222234	10222235	10222236
4000 lm	3000 K - Efficient White	94	3715 lm	34 W	clear	10222309	10222310	10222311
4000 lm	3000 K - Efficient White	94	3885 lm	34 W	without	10222237	10222238	10222239
4000 lm	3500 K	84	3730 lm	28 W	clear	10222312	10222313	10222314
4000 lm	3500 K	84	3900 lm	28 W	without	10222240	10222241	10222242
4000 lm	4000 K	83	3855 lm	28 W	clear	10222315	10222316	10222317
4000 lm	4000 K	83	4030 lm	28 W	without	10222243	10222244	10222245

Technical details as well as weight specifications and measurements have been prepared with care. Errors excepted. All dimensions in mm · LED service life data: L80/B10 at ambient temperature (ta) 25°C. Rated lamp service life 50,000h. Luminous flux and efficiency specifications are subject to a tolerance of +/- 10%. Min CRI Ra: >80 / >90 · Product images are used as an example and may differ from the original · We reserve the right to make changes, insofar as they serve progress. The Single Lighting Regulation (SLR) documentation can be found in our download area. Oktalite Lichttechnik GmbH · Mathias-Brüggen-Str. 73 · 50829 Cologne · T 49 221 59767-0 · F 49 221 59767-40 · mail@oktalite.com · www.oktalite.com · 2022-09-28



Beam angle

Wide Flood



LED Luminous Flux Class	Light colour	CRI R <sub>a</sub>	system luminous flux	System performance	Cover	Order number		
						white	silver	black
2000 lm	2700 K	81	1835 lm	13 W	clear	10222321	10222322	10222323
2000 lm	2700 K	81	1920 lm	13 W	without	10222249	10222250	10222251
2000 lm	3000 K	83	1890 lm	13 W	clear	10222324	10222325	10222326
2000 lm	3000 K	83	1975 lm	13 W	without	10222252	10222253	10222254
2000 lm	3000 K - Efficient White	94	2060 lm	17 W	clear	10222327	10222328	10222329
2000 lm	3000 K - Efficient White	94	2155 lm	17 W	without	10222255	10222256	10222257
2000 lm	3000 K - Brilliant Colour	97	1945 lm	21 W	clear	10222336	10222337	10222338
2000 lm	3000 K - Brilliant Colour	97	2035 lm	21 W	without	10222264	10222265	10222266
2000 lm	3500 K	84	1925 lm	13 W	clear	10222330	10222331	10222332
2000 lm	3500 K	84	2015 lm	13 W	without	10222258	10222259	10222260
2000 lm	4000 K	83	1990 lm	13 W	clear	10222333	10222334	10222335
2000 lm	4000 K	83	2080 lm	13 W	without	10222261	10222262	10222263
3000 lm	2700 K	81	2730 lm	21 W	clear	10222321	10222322	10222323
3000 lm	2700 K	81	2855 lm	21 W	without	10222249	10222250	10222251
3000 lm	3000 K	83	2810 lm	21 W	clear	10222324	10222325	10222326
3000 lm	3000 K	83	2935 lm	21 W	without	10222252	10222253	10222254
3000 lm	3000 K - Efficient White	94	2835 lm	25 W	clear	10222327	10222328	10222329
3000 lm	3000 K - Efficient White	94	2965 lm	25 W	without	10222255	10222256	10222257
3000 lm	3000 K - Brilliant Colour	97	2805 lm	32 W	clear	10222336	10222337	10222338
3000 lm	3000 K - Brilliant Colour	97	2935 lm	32 W	without	10222264	10222265	10222266
3000 lm	3500 K	84	2865 lm	21 W	clear	10222330	10222331	10222332
3000 lm	3500 K	84	2995 lm	21 W	without	10222258	10222259	10222260
3000 lm	4000 K	83	2960 lm	21 W	clear	10222333	10222334	10222335
3000 lm	4000 K	83	3095 lm	21 W	without	10222261	10222262	10222263
4000 lm	2700 K	81	3555 lm	28 W	clear	10222321	10222322	10222323
4000 lm	2700 K	81	3720 lm	28 W	without	10222249	10222250	10222251
4000 lm	3000 K	83	3655 lm	28 W	clear	10222324	10222325	10222326

Technical details as well as weight specifications and measurements have been prepared with care. Errors excepted. All dimensions in mm · LED service life data: L80/B10 at ambient temperature (ta) 25°C. Rated lamp service life 50,000h. Luminous flux and efficiency specifications are subject to a tolerance of +/- 10%. Min CRI Ra: >80 / >90 · Product images are used as an example and may differ from the original · We reserve the right to make changes, insofar as they serve progress. The Single Lighting Regulation (SLR) documentation can be found in our download area. Oktalite Lichttechnik GmbH · Mathias-Brüggen-Str. 73 · 50829 Cologne · T 49 221 59767-0 · F 49 221 59767-40 · mail@oktalite.com · www.oktalite.com · 2022-09-28

4000 lm	3000 K	83	3825 lm	28 W	without	10222252	10222253	10222254
4000 lm	3000 K - Efficient White	94	3710 lm	34 W	clear	10222327	10222328	10222329
4000 lm	3000 K - Efficient White	94	3880 lm	34 W	without	10222255	10222256	10222257
4000 lm	3500 K	84	3730 lm	28 W	clear	10222330	10222331	10222332
4000 lm	3500 K	84	3900 lm	28 W	without	10222258	10222259	10222260
4000 lm	4000 K	83	3850 lm	28 W	clear	10222333	10222334	10222335
4000 lm	4000 K	83	4030 lm	28 W	without	10222261	10222262	10222263

Technical details as well as weight specifications and measurements have been prepared with care. Errors excepted. All dimensions in mm · LED service life data: L80/B10 at ambient temperature (ta) 25°C. Rated lamp service life 50,000h. Luminous flux and efficiency specifications are subject to a tolerance of +/- 10%. Min CRI Ra: >80 / >90 · Product images are used as an example and may differ from the original · We reserve the right to make changes, insofar as they serve progress. The Single Lighting Regulation (SLR) documentation can be found in our download area. Oktalite Lichttechnik GmbH · Mathias-Brüggen-Str. 73 · 50829 Cologne · T 49 221 59767-0 · F 49 221 59767-40 · mail@oktalite.com · www.oktalite.com · 2022-09-28





Beam angle

Very Wide Flood



LED Luminous Flux Class	Light colour	CRI R <sub>a</sub>	system luminous flux	System performance	Cover	Order number		
						white	silver	black
2000 lm	2700 K	81	1830 lm	13 W	clear	10222339	10222340	10222341
2000 lm	2700 K	81	1915 lm	13 W	without	10222267	10222268	10222269
2000 lm	3000 K	83	1885 lm	13 W	clear	10222342	10222343	10222344
2000 lm	3000 K	83	1970 lm	13 W	without	10222270	10222271	10222272
2000 lm	3000 K - Efficient White	94	2055 lm	17 W	clear	10222345	10222346	10222347
2000 lm	3000 K - Efficient White	94	2150 lm	17 W	without	10222273	10222274	10222275
2000 lm	3000 K - Brilliant Colour	97	1940 lm	21 W	clear	10222354	10222355	10222356
2000 lm	3000 K - Brilliant Colour	97	2030 lm	21 W	without	10222282	10222283	10222284
2000 lm	3500 K	84	1920 lm	13 W	clear	10222348	10222349	10222350
2000 lm	3500 K	84	2010 lm	13 W	without	10222276	10222277	10222278
2000 lm	4000 K	83	1985 lm	13 W	clear	10222351	10222352	10222353
2000 lm	4000 K	83	2075 lm	13 W	without	10222279	10222280	10222281
3000 lm	2700 K	81	2725 lm	21 W	clear	10222339	10222340	10222341
3000 lm	2700 K	81	2850 lm	21 W	without	10222267	10222268	10222269
3000 lm	3000 K	83	2800 lm	21 W	clear	10222342	10222343	10222344
3000 lm	3000 K	83	2930 lm	21 W	without	10222270	10222271	10222272
3000 lm	3000 K - Efficient White	94	2830 lm	25 W	clear	10222345	10222346	10222347
3000 lm	3000 K - Efficient White	94	2960 lm	25 W	without	10222273	10222274	10222275
3000 lm	3000 K - Brilliant Colour	97	2800 lm	32 W	clear	10222354	10222355	10222356
3000 lm	3000 K - Brilliant Colour	97	2925 lm	32 W	without	10222282	10222283	10222284
3000 lm	3500 K	84	2855 lm	21 W	clear	10222348	10222349	10222350
3000 lm	3500 K	84	2990 lm	21 W	without	10222276	10222277	10222278
3000 lm	4000 K	83	2950 lm	21 W	clear	10222351	10222352	10222353
3000 lm	4000 K	83	3085 lm	21 W	without	10222279	10222280	10222281
4000 lm	2700 K	81	3545 lm	28 W	clear	10222339	10222340	10222341
4000 lm	2700 K	81	3710 lm	28 W	without	10222267	10222268	10222269
4000 lm	3000 K	83	3645 lm	28 W	clear	10222342	10222343	10222344

Technical details as well as weight specifications and measurements have been prepared with care. Errors excepted. All dimensions in mm · LED service life data: L80/B10 at ambient temperature (ta) 25°C. Rated lamp service life 50,000h. Luminous flux and efficiency specifications are subject to a tolerance of +/- 10%. Min CRI Ra: >80 / >90 · Product images are used as an example and may differ from the original · We reserve the right to make changes, insofar as they serve progress. The Single Lighting Regulation (SLR) documentation can be found in our download area. Oktalite Lichttechnik GmbH · Mathias-Brüggen-Str. 73 · 50829 Cologne · T 49 221 59767-0 · F 49 221 59767-40 · mail@oktalite.com · www.oktalite.com · 2022-09-28

4000 lm	3000 K	83	3815 lm	28 W	without	10222270	10222271	10222272
4000 lm	3000 K - Efficient White	94	3700 lm	34 W	clear	10222345	10222346	10222347
4000 lm	3000 K - Efficient White	94	3870 lm	34 W	without	10222273	10222274	10222275
4000 lm	3500 K	84	3720 lm	28 W	clear	10222348	10222349	10222350
4000 lm	3500 K	84	3890 lm	28 W	without	10222276	10222277	10222278
4000 lm	4000 K	83	3845 lm	28 W	clear	10222351	10222352	10222353
4000 lm	4000 K	83	4020 lm	28 W	without	10222279	10222280	10222281



Efficient White:  $R_9 = 75$ ,  $R_f = 91$ ,  $R_g = 102$



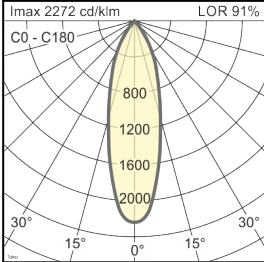
Brilliant Colour:  $R_9 = 94$ ,  $R_f = 95$ ,  $R_g = 104$

Technical details as well as weight specifications and measurements have been prepared with care. Errors excepted. All dimensions in mm · LED service life data: L80/B10 at ambient temperature ( $t_a$ ) 25°C. Rated lamp service life 50,000h. Luminous flux and efficiency specifications are subject to a tolerance of  $\pm 10\%$ . Min CRI Ra:  $>80 / >90$  · Product images are used as an example and may differ from the original · We reserve the right to make changes, insofar as they serve progress. The Single Lighting Regulation (SLR) documentation can be found in our download area. Oktalite Lichttechnik GmbH · Mathias-Brüggen-Str. 73 · 50829 Cologne · T 49 221 59767-0 · F 49 221 59767-40 · mail@oktalite.com · www.oktalite.com · 2022-09-28

Optic 3D faceted reflectors  
 Type Optic integrated

**Beam angle**  
**Medium Flood**

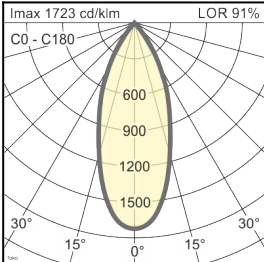
Toko - MF			
Höhe [m]	KegelØ [cm]	E(0°) [lx/klm]	E(C0) [lx/klm]
1	53	2272	1034
2	106	568	259
3	159	252	115



Cover	LOR
without	91 %
clear	87 %

**Beam angle**  
**Flood**

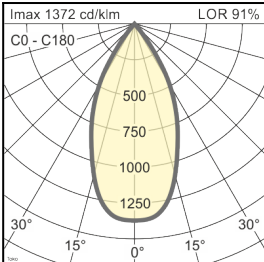
Toko - FL			
Höhe [m]	KegelØ [cm]	E(0°) [lx/klm]	E(C0) [lx/klm]
1	73	1723	715
2	146	431	179
3	220	191	79



Cover	LOR
without	91 %
clear	87 %

**Beam angle**  
**Wide Flood**

Toko - WFL			
Höhe [m]	KegelØ [cm]	E(0°) [lx/klm]	E(C0) [lx/klm]
1	93	1372	511
2	187	343	128
3	280	152	57



Cover	LOR
without	91 %
clear	87 %

Technical details as well as weight specifications and measurements have been prepared with care. Errors excepted. All dimensions in mm · LED service life data: L80/B10 at ambient temperature (ta) 25°C. Rated lamp service life 50,000h. Luminous flux and efficiency specifications are subject to a tolerance of +/- 10%. Min CRI Ra: >80 / >90 · Product images are used as an example and may differ from the original · We reserve the right to make changes, insofar as they serve progress. The Single Lighting Regulation (SLR) documentation can be found in our download area. Oktalite Lichttechnik GmbH · Mathias-Brüggen-Str. 73 · 50829 Cologne · T 49 221 59767-0 · F 49 221 59767-40 · mail@oktalite.com · www.oktalite.com · 2022-09-28





Supply unit - LED

## Driver

# oktalite

Version	Independent control gear
Connection type	Pre-wired plug-in connectivity
Mains connection	GST 18i3
Cable length secondary	400 mm
Nominal voltage	220 - 240 V, 50/60Hz
protection	IP20
protection class	I, II
Lighting controls	on request
Lighting technology	LED

Lighting technology	Luminaire connection	Output	System performance	max. luminaires B16	Order number
LED	RNV	350 mA	13 W	49	10211946
LED	RNV	450 mA	17 W	49	10211947
LED	RNV	550 mA	21 W	25	10211949
LED	RNV	650 mA	25 W	25	10211951
LED	RNV	750 mA	28 W	25	10211953
LED	RNV	850 mA	32 W	25	10211955
LED	RNV	900 mA	34 W	28	10259145

Technical details as well as weight specifications and measurements have been prepared with care. Errors excepted. All dimensions in mm · LED service life data: L80/B10 at ambient temperature (ta) 25°C. Rated lamp service life 50,000h. Luminous flux and efficiency specifications are subject to a tolerance of +/- 10%. Min CRI Ra: >80 / >90 · Product images are used as an example and may differ from the original · We reserve the right to make changes, insofar as they serve progress. The Single Lighting Regulation (SLR) documentation can be found in our download area. Oktalite Lichttechnik GmbH · Mathias-Brüggen-Str. 73 · 50829 Cologne · T 49 221 59767-0 · F 49 221 59767-40 · mail@oktalite.com · www.oktalite.com · 2022-09-28