



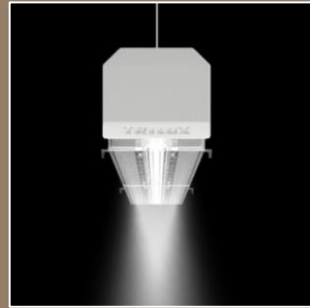
จิต
ทเว้นตี ทุ



TWENTY TWO



SMART
LiFE | LiVE





GT stands for **grand turismo**, or **grand touring**. The term was coined by an Italian individual, and the definition was clear: A GT car fits between a Sport car and a Luxury car. It should have a big engine, a comfortable ride, a luxurious interior and elegant bodywork.

1997: Key **Dealer** for PHILIPS Professional lighting
2003: **Distributor** for PHILIPS PEU market
2008: **Project Dealer** for PHILIPS Professional lighting
2018: **VAP** for PHILIPS Professional lighting & control
2020: **CSi** for PHILIPS Connected lighting & control

2003

2018



2008

1997

2020



Since a successful family business found **GT22** in 2022, those two decades of lighting professional has then turned into a company philosophy of SMART LIFE - SMART LiVE.

GT22 is now having a **Good Time** in selecting **Good Things that connect people with intelligent living solutions, attractive layouts and proper functions.**

G TWENTY 2 Brands



Aesthetics Meets Function since 1916
from Barcelona, SPAIN.



GERMAN Engineering that simplifies your
light since 1912.

Since 1916 from Barcelona

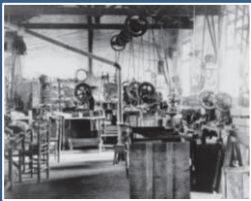
simon



1920 - Olot



1900 - Arthur Simon with his parents



1925 - The factory on Calle Pare Roca, Olot



1943 - Porcelain factory in Sant Andreu, Barcelona



1949 - IEP booth at the Feria de Madrid



1975 - Olot factory



1998 - Simon VOX



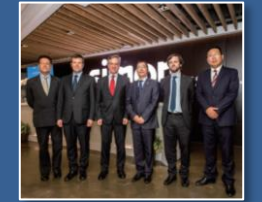
1999 - Haiyan factory, China



2015 - Sense



2008 - Beijing Olympic stadium, China



2018 - Ambassador visiting Simon China

1916

ARTURO SIMON CREATES THE COMPANY IN OLOT

1925

ARTURO SIMON EXPANDS THE RANGE OF ELECTRIC EQUIPMENT

1942

THE PORCELAIN FACTORY OPENS

1957

SIMON BUYS PME

1966

SIMON BUYS IEP

1993

LAUNCH OF THE FIRST HOME AUTOMATION SYSTEM

1998

SIMON BEGINS TO INTERNATIONALISE

1999

SIMON ENTERS THE CHINA MARKET

2006

SIMON ENTERS ASEAN MARKET

2008

Simon is selected as an official supplier of the 2008 Olympic games in Beijing.

2015

NEW SENSE INTERFACES

The combination of touch-control, ergonomics and interaction with the environment make the Sense interfaces deserving of several international awards.

INTERNATIONAL AWARDS

iF Gold Design Award - interfaces SENSE Plus X Award - Collection of interfaces SENSE iF Product Design Award - Luminaria Cool **Fluvia**

2016

100 YEARS' ANNIVERSARY

2018

Mr. Alberto Carnero, the incumbent Spanish ambassador to China, Visiting Simon China

INTERNATIONAL AWARDS

iF and Red Dot

2020

Creation of the **IoT platform and Simon HUB Pro iO**



1925 Bayonet bulb mount



1920-1930 851 "Extra" rotary switch



1956 Simon 24



1962 Simon 25



1973 Simon 36



1978 Simon 31



1992 Simon 75



1995 Simon 88



2005 Simon 82 Nature



2013 Simon i7

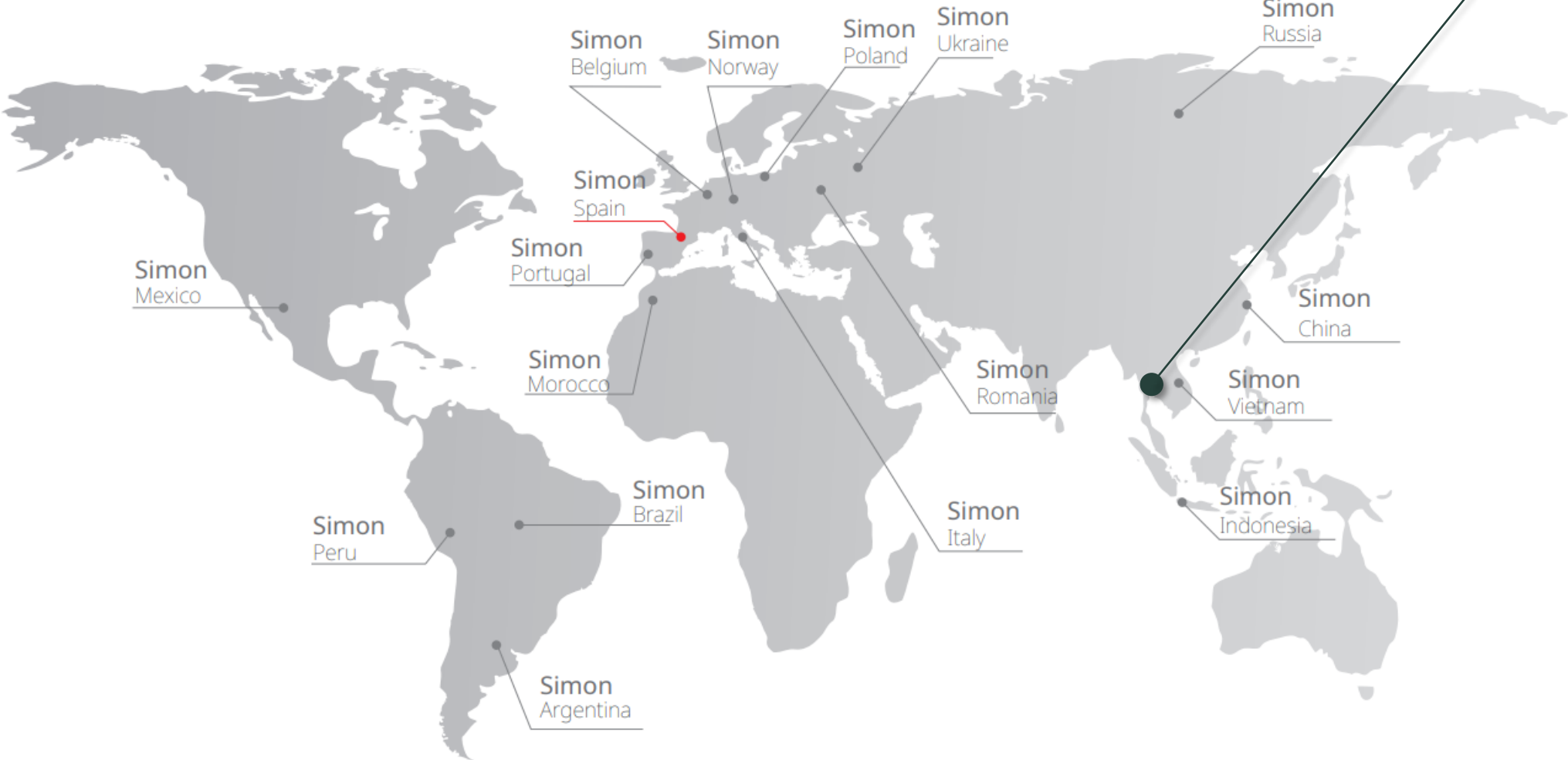


2016 Simon E6



2020 Simon E3

Global Presence



Aesthetics Meets Function

simon



2020
2021

- Design Award for Simon Smart Home
- Reddot Winner 2020 interface design
- iF Design Award for X3
- Reddot Winner 2021 for Roompad

2019

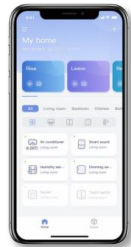
iF Award and Reddot Award Winner for Simon 100

2018

- Gold Award for Fluvia Loop
- Reddot Award for Loop from the Fluvia collection, Merak from Outdoor and Simon 400

2017

iF Award for the Arch and Point luminaires in the Fluvia Collection



reddot winner 2020 interface design



2016

Reddot Awards, iF Awards and Delta Awards

2015

- iF Award for the Simon 24 Harmonie mechanism
- Reddot Award for the Cool and Slim Fluvia luminaires and for Simon 100

2014

- Delta Award for Cool, Detail 82 and Sense
- iF Award for Fluvia Slim luminaire
- Plus X Award for Detail 82, Sense, Cool and Slim from the Fluvia collection

2013

Delta Awards for Simon Slim luminaire from Fluvia collection



APAC Product Portfolios

simon



SMART Hotel - RCU



SMART Home

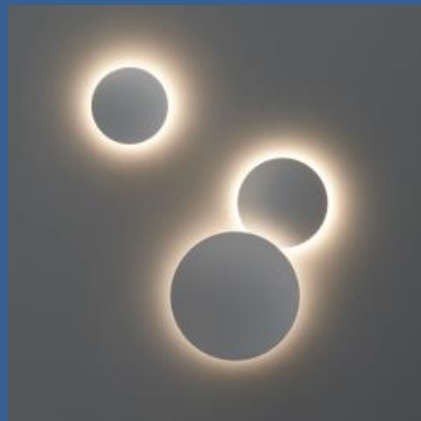


SMART Office

SMART SOLUTIONS

SWITCHES & SOCKET

LIGHTINGS



AESTHETIC Light



INDOOR Lighting



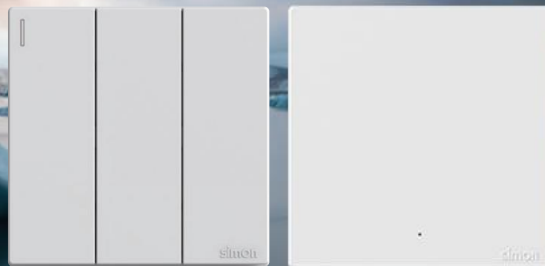
OUTDOOR Lighting





**Main Voltage (220V)
MV Switch**

Simon | M3



Simon | S20



Simon | V8



Simon | i7



Simon | E3

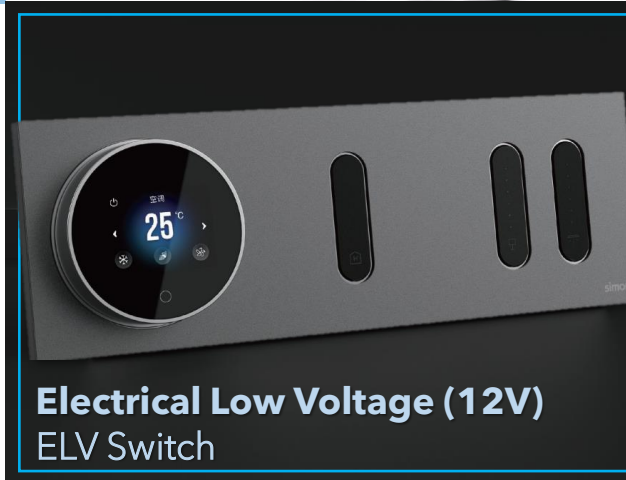
Simon | E6

Simon | E35

Simon | 52S

Simon | 50E

**Electrical Low Voltage (12V)
ELV Switch**



**Bluetooth Low Energy
BLE System**



SMART Solutions



SMART Hotel - RCU



SMART Home



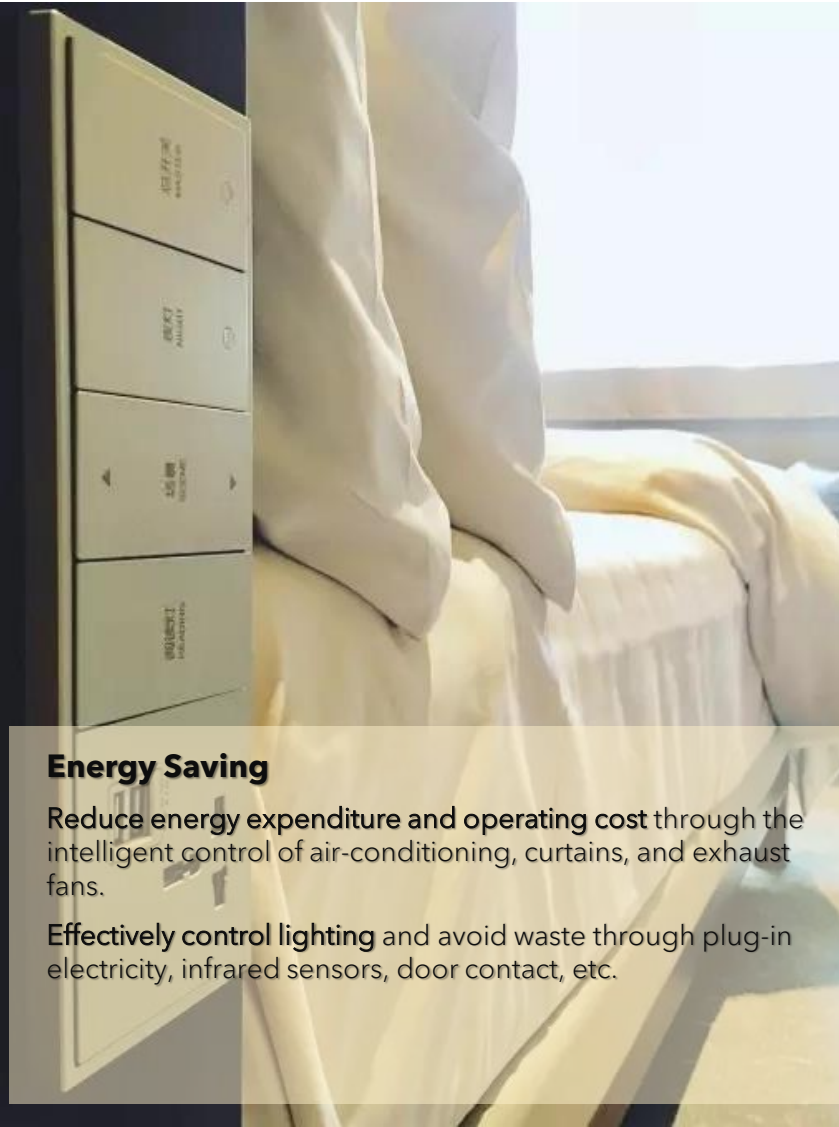
SMART Office



Room Control Units (RCU)



simon



Energy Saving

Reduce energy expenditure and operating cost through the intelligent control of air-conditioning, curtains, and exhaust fans.

Effectively control lighting and avoid waste through plug-in electricity, infrared sensors, door contact, etc.

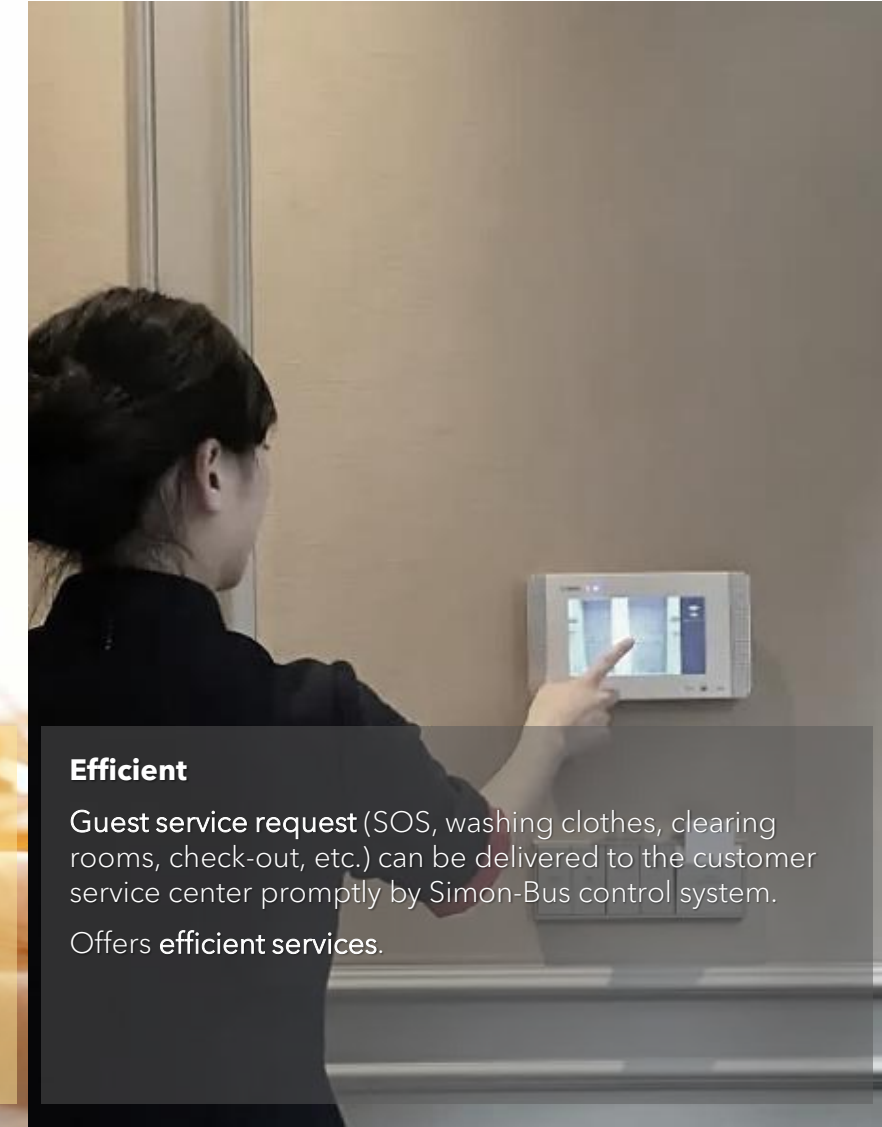


Comfortable

Lighting scene is combined with curtains, creating a warm guestroom atmosphere.

Air-conditioning system, central ventilation system, and aromatic system are applied to present a fresh and comfortable environment.

Switch panel is integrated with hotel design style, improving hotel grade.

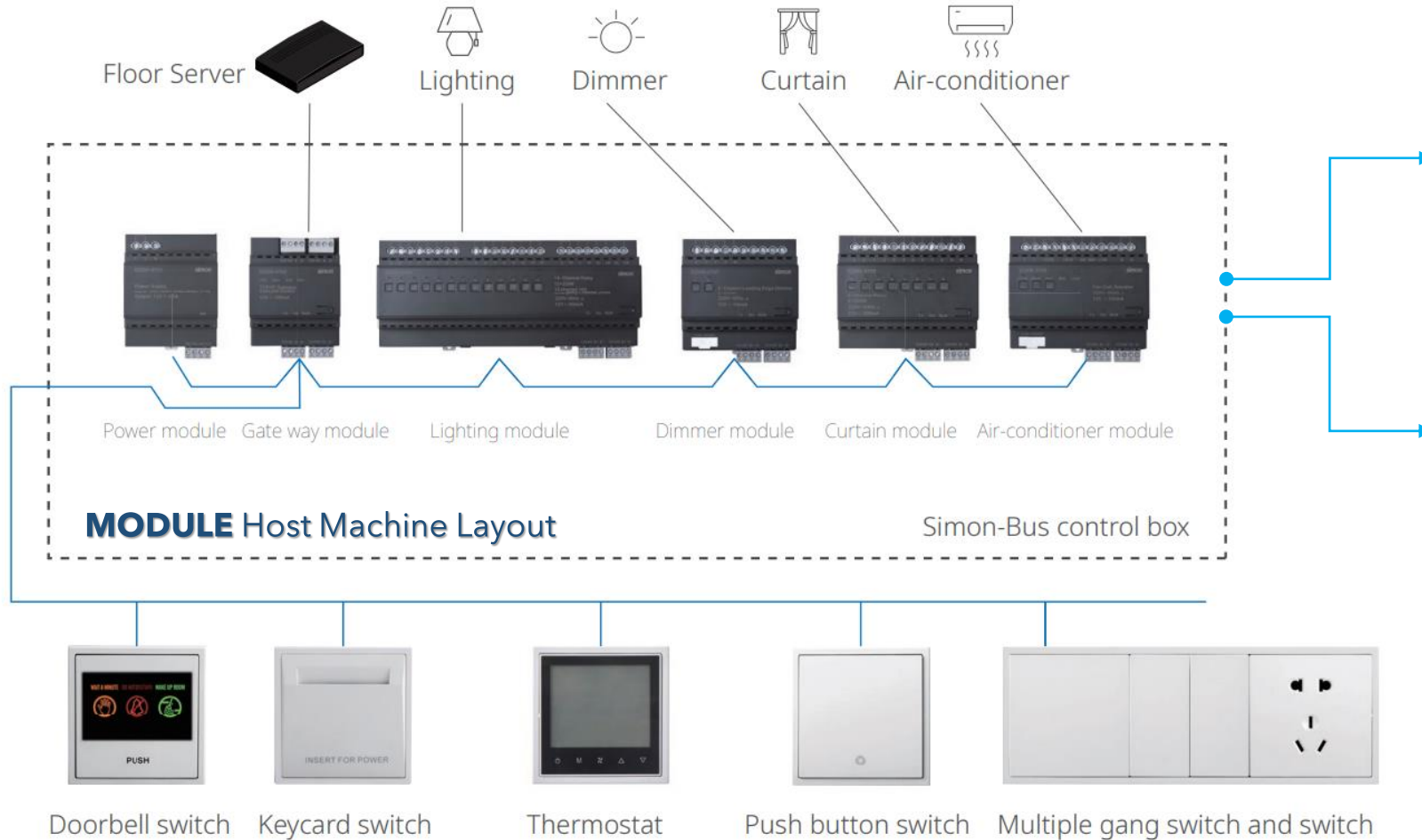


Efficient

Guest service request (SOS, washing clothes, clearing rooms, check-out, etc.) can be delivered to the customer service center promptly by Simon-Bus control system.

Offers efficient services.

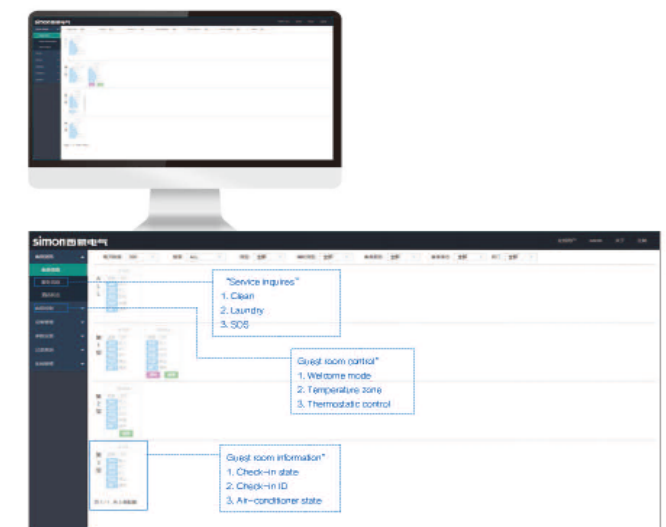
Simon | Bus



For Individual Users



For Management Users



Electrical Low Voltage (ELV) Switches



Simon|S20



Simon|V8

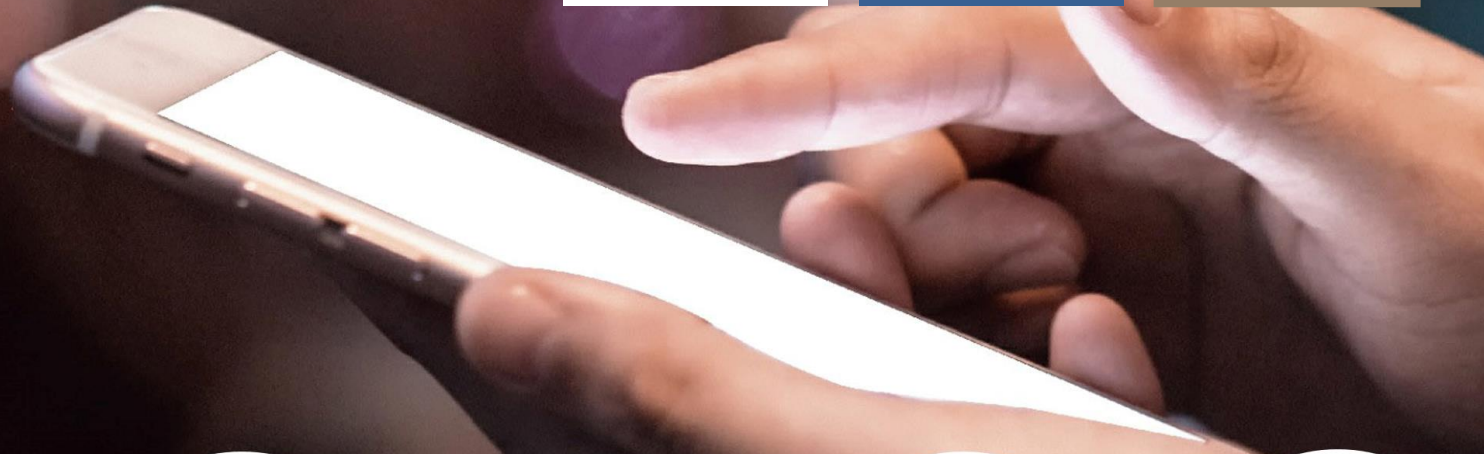


Simon|i7



Simon|E6

Simon | Smart Home



Smart Switch



Environment



Security



Control Gateway



Entertainment Automation



Power Adaptor



Smart Lighting



APP control



Voice control



Wall switch



Automation



Schedule-App setting customization



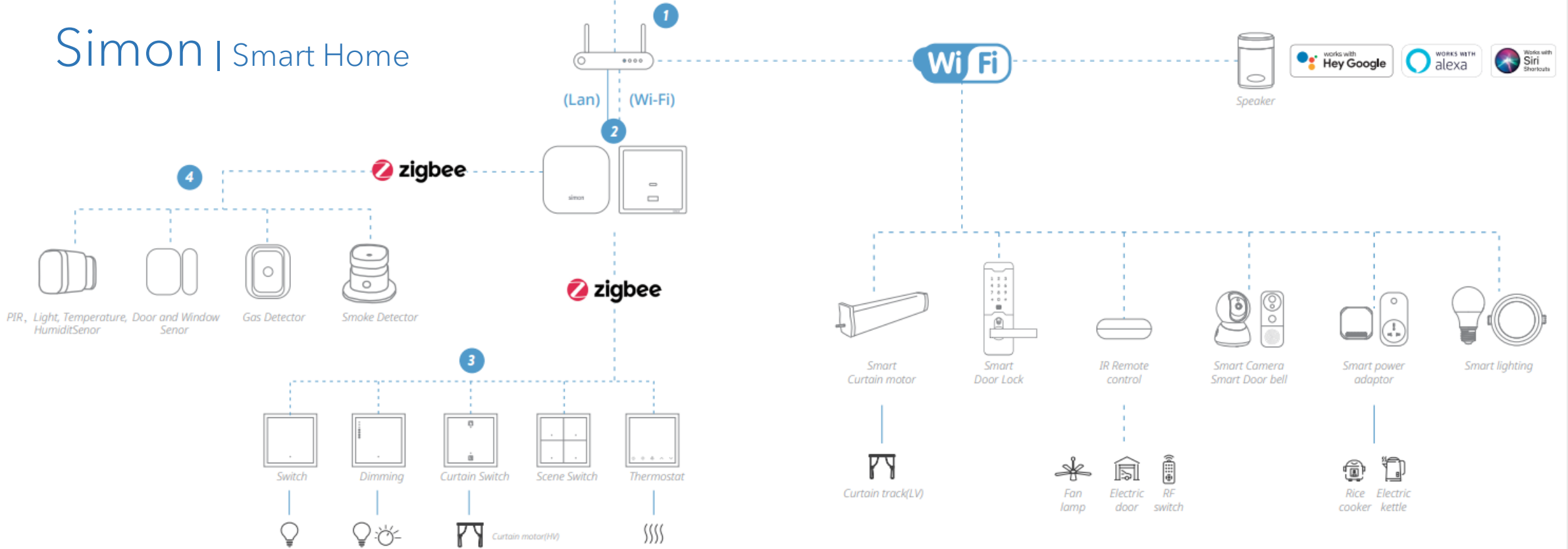


How Does Simon SMART Home Work?

- 1 Internet connection is only required for setup or for outside control.
- 2 Gateway, is the Zigbee Coordinator that keeps all the home's configurations to allow you to interact even without Internet connection.
- 3 Zigbee devices: Switches, dimmers, thermostat control all the loads in your home.
- 4 Smart sensors: to improve the comfort and flexibility of your habitat. You can use them to activate different scenarios.
- 5 Wi-Fi devices can work without gateway and will also be integrated with Simon system to provide infinitely solutions.

— Wiring - - - - - Wireless

Simon | Smart Home





More Convenient and Comfortable Life



Breakfast

While dressing, you hear the coffee machine start to smash the coffee bean. After 5 minutes, a wonderful smell of fresh coffee is caught by your nose. Also, the sliced bread is pop up from the toaster. Time to enjoy your breakfast!



Security alarm

An alert is shown on your phone, saying the window of balcony is open. By switching to the camera, and open real-time monitoring video, you find out that is neighbor's cat came to visit your cat. You are relieved.



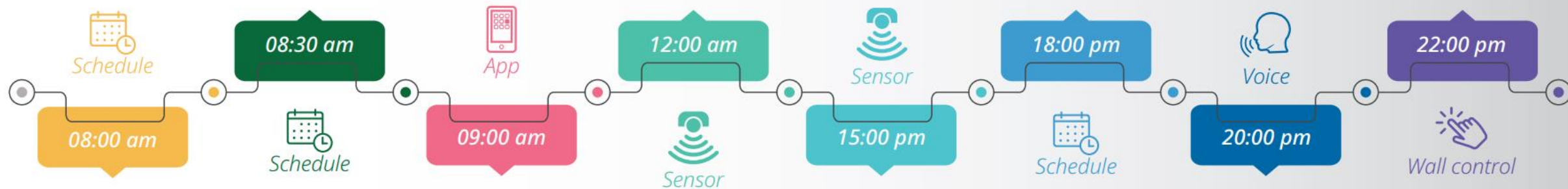
Back home

Working in such a hot weather makes people irritable, now you want to back home as soon as possible. The moment you enter the room, you feel cool and comfortable. Because the AC has already started to perform before you arrive home.



Bed time

It is nearly the end of the day, time to go to bed. By laying on the bed, you press the "Sleep Mode" switch near your bed. All the lights are off, AC will adjust the temperature by itself to make you feel comfortable meanwhile saving energy. Sweet dream!



Wake up

The curtain is open slowly and the music is played softly as scheduled. You are surrounded by a warm sunshine and soft music, then wake up from a whole night sleep.



Leave home

You are already on the way to office, then you just realize that you forgot to turn off the AC when you left home. But you are not worried at all, just fish out your mobile, then click the leaving home mode, the AC will be turned off, also all the lights in your home.



Unexpected raining

There is a heavy rain starts suddenly in the afternoon. In the past, you will be worried if you close the window in house. But now, with the cooperation between sensor and gateway, the window will close automatically when it senses raining.



Movie time

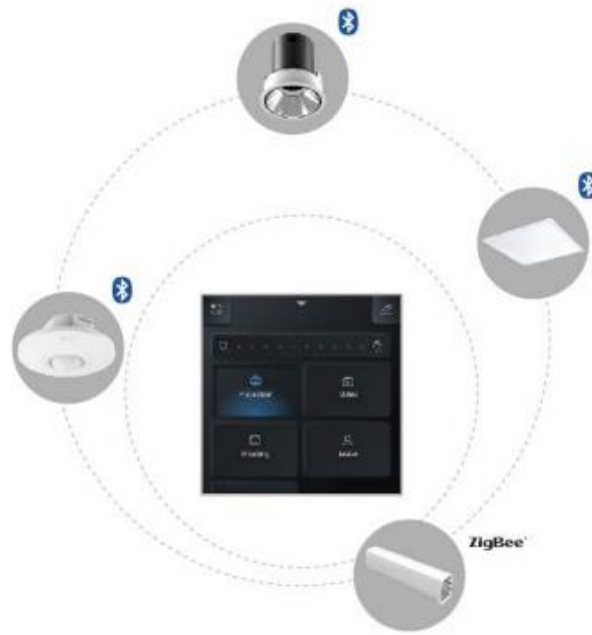
After dinner, you want to relax and watch a movie, just saying "Hi Google, turn on the movie scenario." Then the curtains are closed, the lightings are dimmed, now what you need to do is to find a comfortable spot on the sofa.





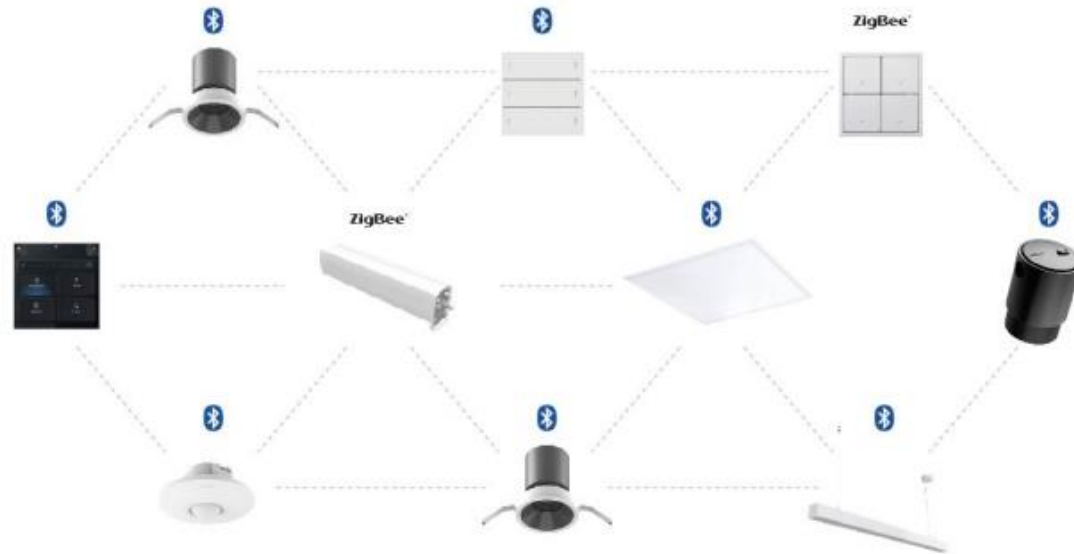
Simon | Smart Office





Simon | Smart Office

Simon Bluetooth Low Energy (BLE) using Bluetooth Mesh communication architecture, with many-to-many and decentralized mesh communication mechanism, each node is connected with each other, which can effectively avoid single point of failure.



Features



Switch control

Independent control of each light



Dimming & Tunable WH

Support to adjust light brightness and color temperature



Smart scene

Light can be controlled independently or be in a group



Constant illumination control

Detect sunlight intensity
Dynamically adjust indoor lighting



Timing control

The selected scene can be executed after a certain period of time



Independent control

Independent lighting control of each area



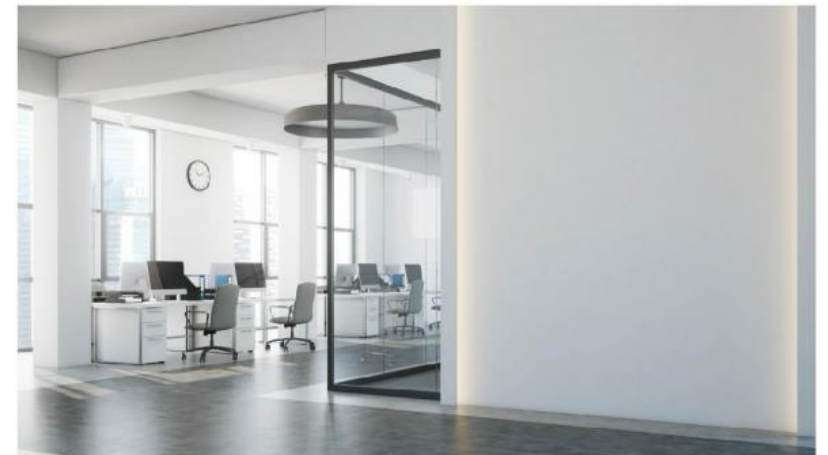
Curtain Control

Smart curtain control can be realized via Simon BLE

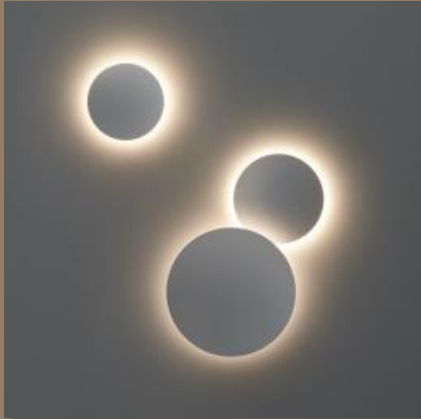


Infrared dynamic monitoring

Real-time monitoring of person motion
Adjust lighting scenes correspondingly



LIGHTINGS



AESTHETIC Light
"Fluvia"



INDOOR Lighting



OUTDOOR
Lighting





AESTHETIC Lights “Fluvia”

D R O P



Drop

Drops of light fall on different surfaces, creating personalized compositions that define spaces. Drop highlights the details of what's essential.

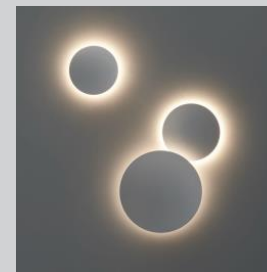
It's an adjustable system, a combination of spotlights and structural elements creating luminaires that offer the possibility of accentuating light where necessary. Therefore, Drop becomes a structural element which shares the architectural concept.





AESTHETIC Lights “Fluvia”

L O O P

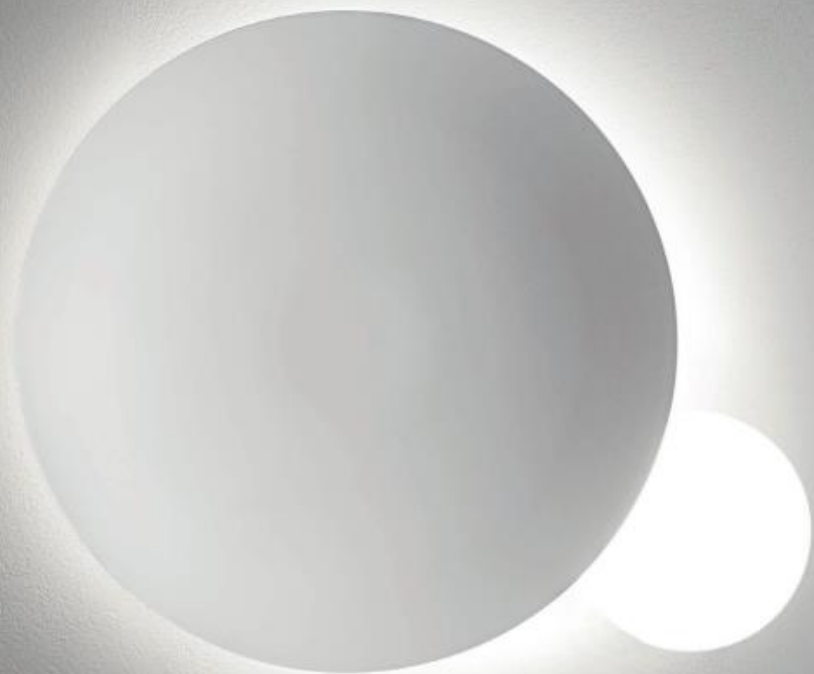


Loop

Loop is a contemporary interpretation of lighting art that invites to create spaces with shapes and light, both in unitary and group installation. Loop gives every space a distinct identity, transforming the concept of indoor lighting by offering freedom to the spatial creation of forms and light.

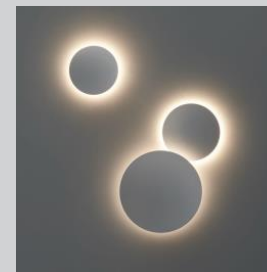
Antoni Arola design for Simon





AESTHETIC Lights “Fluvia”

M O O D



Mood

Mood turns the vertical and horizontal planes with which we create and define spaces into elements that acquire a new architectural dimension when integrating the light source on the wall as if it was part of it.

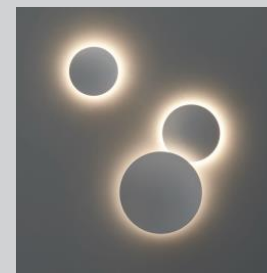
Ricard Vila design for Simon





AESTHETIC Lights “Fluvia”

A R C H



Arch

Arch is simplicity and elegance. Emotion through its geometry, a circle or square of light.

Arch can be grouped and is steerable, it is a luminaire that can be built in, trimless or surface.

Arch is suitable for general lighting or to highlight a space.

Josep Lluscà design for Simon



AESTHETIC Lights “Fluvia”

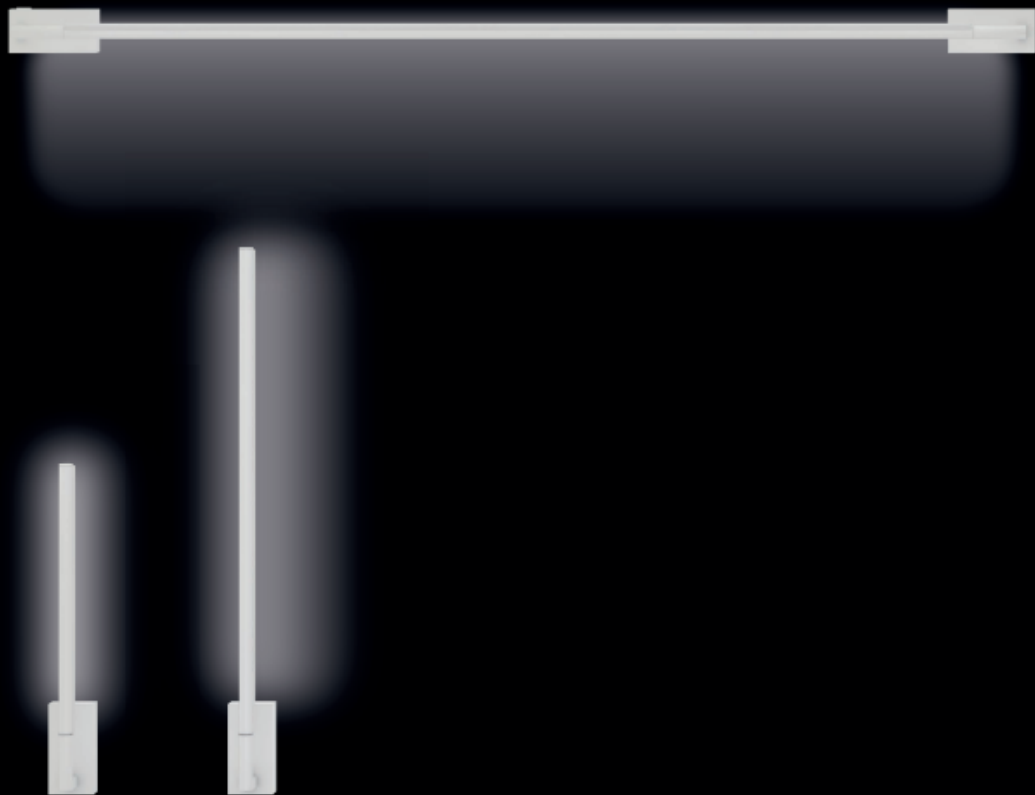
P O I N T



Point

Point is focused precision, a luminaire designed to transfer prominence to any object or space. Point can act alone or in group, shaping the space and highlighting details through careful light direction onto surfaces. Yet in its definition, Point goes unnoticed: a minimalist tool offering protagonism through illumination.





AESTHETIC Lights "Fluvia"

S L I M



Slim

Slim is symmetric perfection. It is the essence of light transformed into luminaire.

Slim was created to generate an environment of tranquility. It is physically able to adapt and rotate in order to fit any direction and surface.

Josep Llusçà design for Simon



Indoor & Outdoor Lightings



Downlight

KC1

Panel light

PL32

Highbay

HB G5

Road light

RD50

Strip light

SS52

ALTA | 68 Series

HS68

Waterproof

WP30

Flood light

FL30

PROJECT References



SIMON Project References

GRAND HYATT

Nusa Dua, Bali
Indonesia
636 Rooms

Product solution:
i7 switch&socket



GRAND
HYATT

simon



SIMON Project References

MANDARIN ORIENTAL HOTEL

Kuala Lumpur, Malaysia

Product solution:

i7 switch & socket



SIMON Project References

BANYAN TREE

Phuket, Thailand
Serenity Resort,
launched in 2018

Product solution:
i7 switch&socket



BANYAN TREE

simon



SIMON Project References

DOUBLE TREE BY HILTON

Plenchit, Bangkok, Thailand
251 rooms

Product solution:
i7 switch&socket



SIMON Project References

AMARA SIGNATURE

340 rooms, Shanghai



Product solution:

RCU, i7 switch & socket, with scenario control, dimming circuits and electrical curtain.



SIMON Project References

CAPELLA HOTEL

77 villas, Shanghai
Designed by JAYA STUDIO



Product solution:

RCU, i7 switch & socket, the system is connected with hotel management software and let front desk to turn on the air con when guests check-in.




CAPELLA


simon


GT²²

SIMON Project References

EDITION HOTEL

145 rooms, Shanghai



Product solution:

RCU, V8 switch & socket, with scenario control, dimming circuits and electrical curtain.



THE SHANGHAI
EDITION

simon



SIMON Project References

HILTON

Jiu Zhai Gou, Sichuan



Product solution:

RCU, i7 switch & socket with
scenario control.



Hilton
HOTELS & RESORTS

simon



SIMON Project References

MARRIOTT

Sanya, Hainan



Product solution:

RCU, V8 switch & socket, with scenario control and dimming circuits.



simon



SIMON Project References

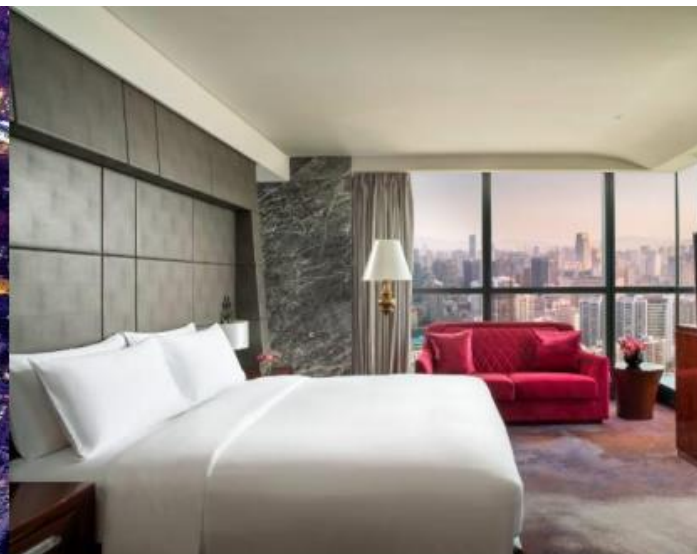
SOFITEL

Kunming, Yunnan



Product solution:

RCU, i7 switch & socket, with scenario control, dimming circuits and electrical curtain.



SOFITEL
LUXURY HOTELS

simon



SIMON Project References

HOME CITY COMPLEX

Hanoi, Vietnam

Product solution:

17 Switch & Socket



Down light



simon



SIMON Project References

PASSWORD RESIDENCE

Beijing, China

Product solution:

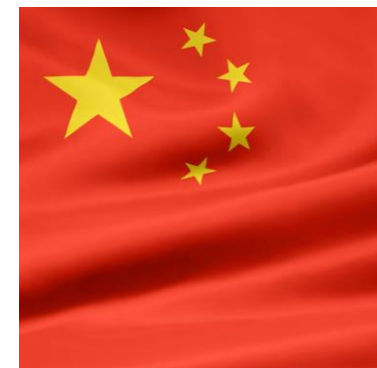
Spot light



Down light

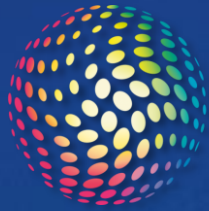


LED strip



simon





TRILUX
SIMPLIFY YOUR LIGHT.

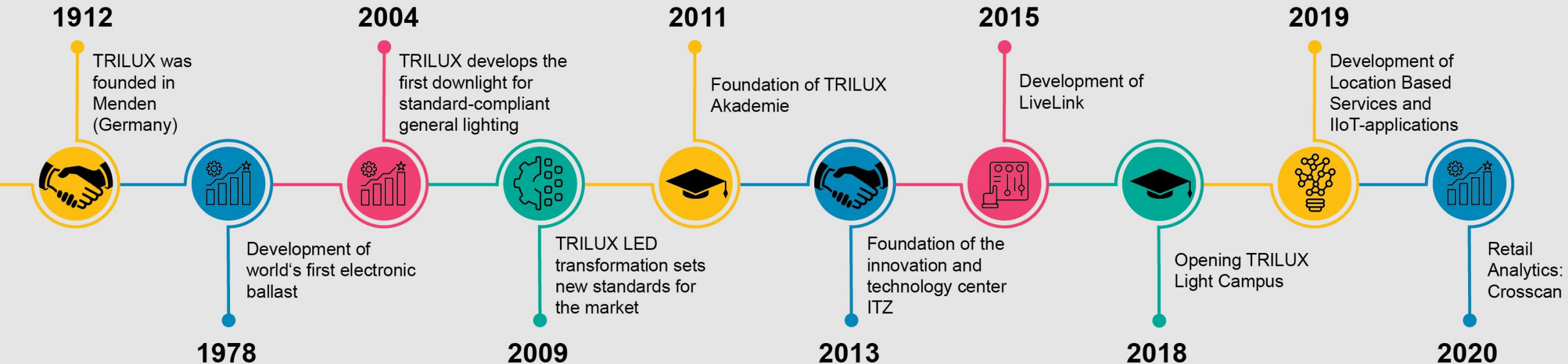


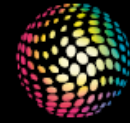
After Wilhelm Lenz founded the “manufacture for luminaire components” in Menden, Germany, **TRILUX** has known as the potential and diversity of light for 111 years.

Today **TRILUX Simplify Your Light** represents the most simple and reliable path to customized, energy-efficient and sustainable lighting solutions.



MILESTONES of TRILUX Light History





TRILUX
SIMPLIFY YOUR LIGHT.

TRILUX GROUP

GLOBAL Lighting Solutions
to Simplify THAI Life

Kópavogur

Oslo

Vrigstad

Tallinn

Riga

Lisburn

Amersfoort

Chelmsford

Mechelen

Herlev

Vilnius

Warsaw

Entzheim

Prague

Bratislava

Vienna

Budapest

Spreitenbach

Caponago

Maribor

Zagreb

Prahova

Belgrade

Sofia

Lisbon

Zaragoza

Istanbul

Yerevan

Athens

Lebanon

Bnei Berak

Amman

Kuwait-City

New Delhi

Dubai

Muscat

Jeddah

Sanaa

Zhuhai

Hong Kong

Ha Noi

ICT

G
TWENTY TWO

Singapore

■ Sales Offices

● Partners

zalux
light evolution

TRILUX
SIMPLIFY YOUR LIGHT.

watt24

oktalite

Hamburg

Berlin

Leipzig

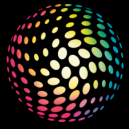
Cologne

Arnsberg

Nuremberg

Leinfelden-Echterdingen

Ismaning



TRILUX
SIMPLIFY YOUR LIGHT.



SUSTAINABLE

Particularly simple maintenance access.

Maintenance work in cleanrooms is particularly time consuming and cost intensive due to the elevated hygiene requirements. Fidesca G3 LED is prepared for this twice over. Firstly, with a long service life of 90,000 h (L80), and secondly, with easy maintenance access. If maintenance is required, the luminaire's light engine can be replaced. No luminaire replacement, no interventions in the building structure.

90,000 h



INDIVIDUAL LIGHTING CONCEPTS

In addition to the large number of luminaire inserts, other components such as sensors, emergency lighting, spotlights or loudspeakers can be simply inserted via plug and play. This makes it easy to implement individual lighting concepts.

Customized



MAINTENANCE IN RECORD TIME

Bye-bye effort: for easy maintenance and repair, the luminaire head can be opened without tools and with just one hand via a practical locking lever. Replacing the electrical block also does not require any tools.

Simple and reliable



SMART MODULE WITH SENSOR

On request, Tugra is available with an intelligent end cap with sensor technology, e.g. for detecting persons. The sensor technology controls either the single luminaire or individually connected luminaire groups, and can also implement smart applications such as running light in parking garages and logistics applications. Subsequent conversion is quick and easy via the end cap.

Energy-efficient





"Highlights"



Application - OFFICE



Amatris LED



Creavo LED



Luceo Slim LED



Application - INDUSTRY



Mirona Fit LED



E-line Next LED



Tugra



Application - SHOP & RETAIL



Light Panel for Track



Grado



B.VEO Track



Application - OUTDOOR



Faciella Slim LED



Lumega IQ LED

NEW



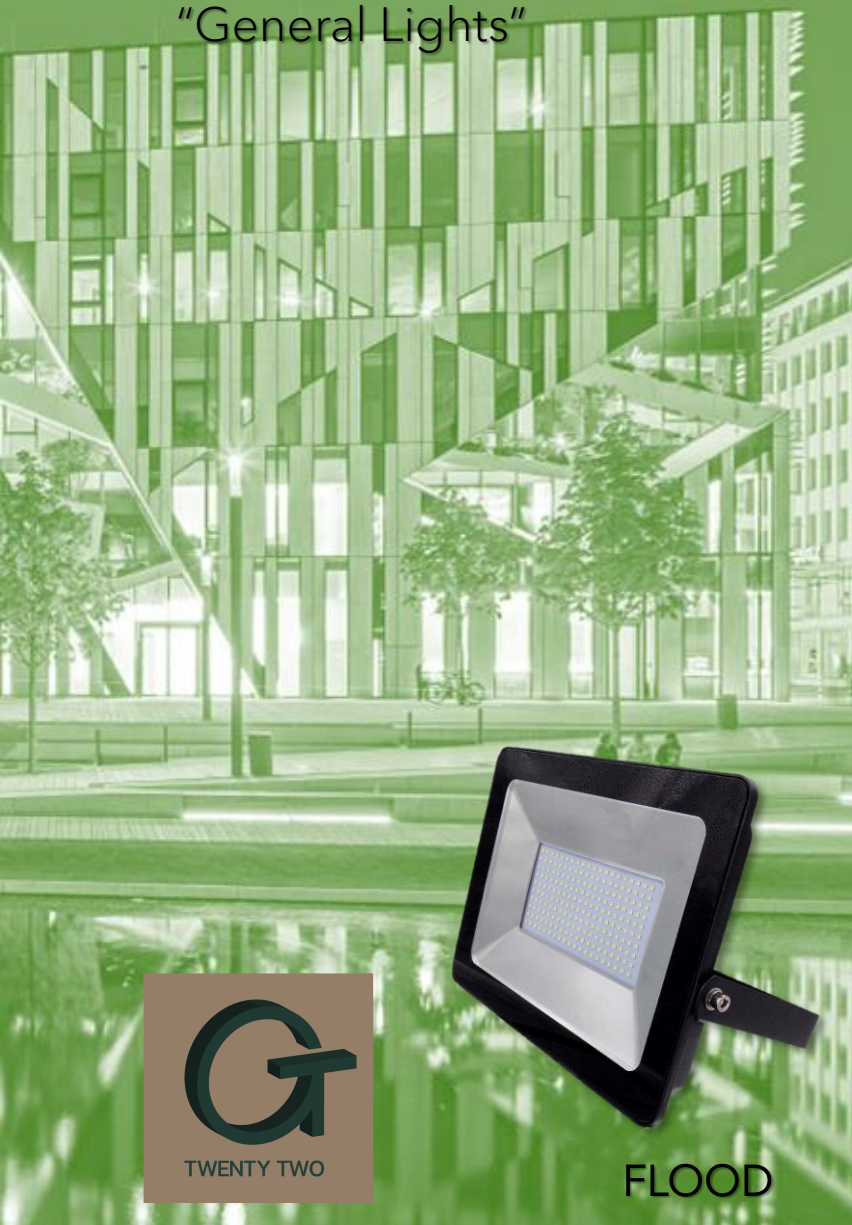
ConStela 19 LED



TWENTY TWO



"General Lights"



FLOOD



BAY



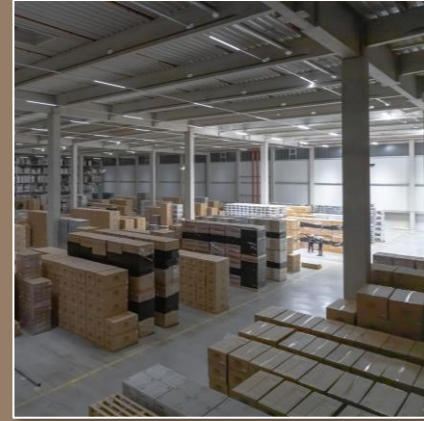
SPACE



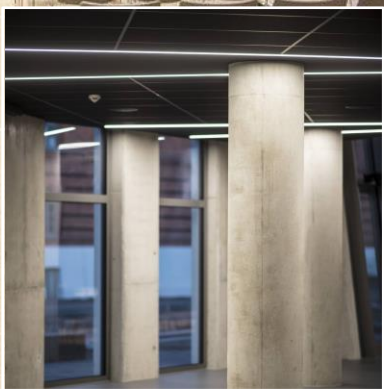
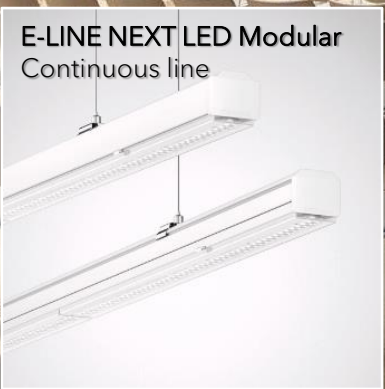
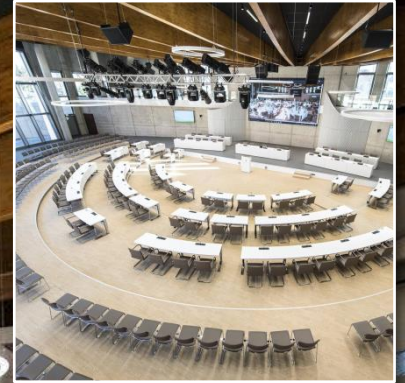
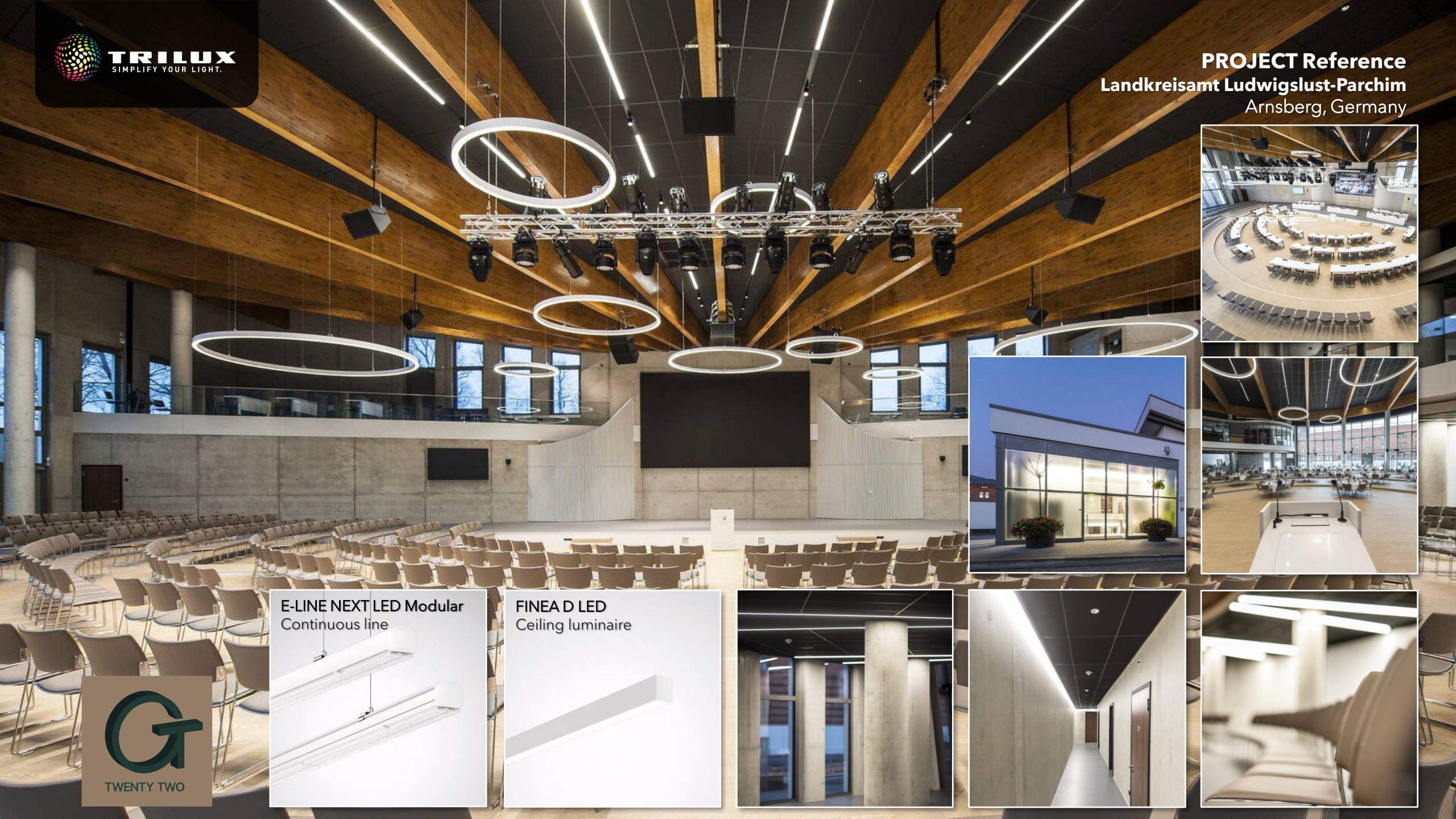
PROJECT References



TRILUX
SIMPLIFY YOUR LIGHT.



TWENTY TWO

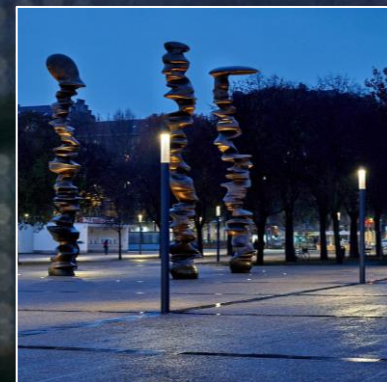
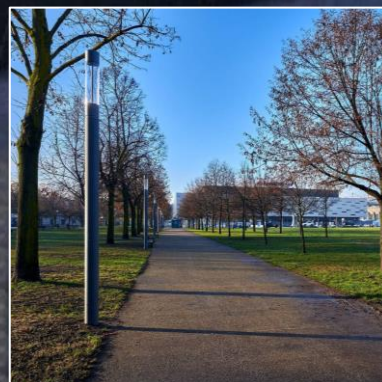


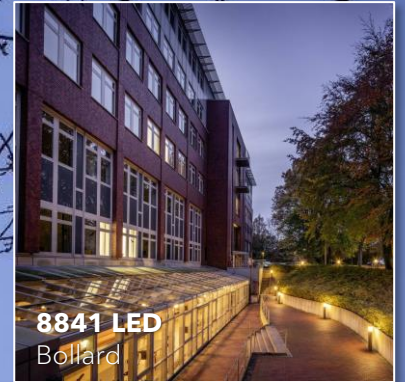


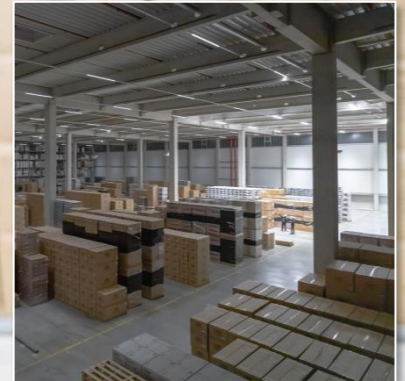
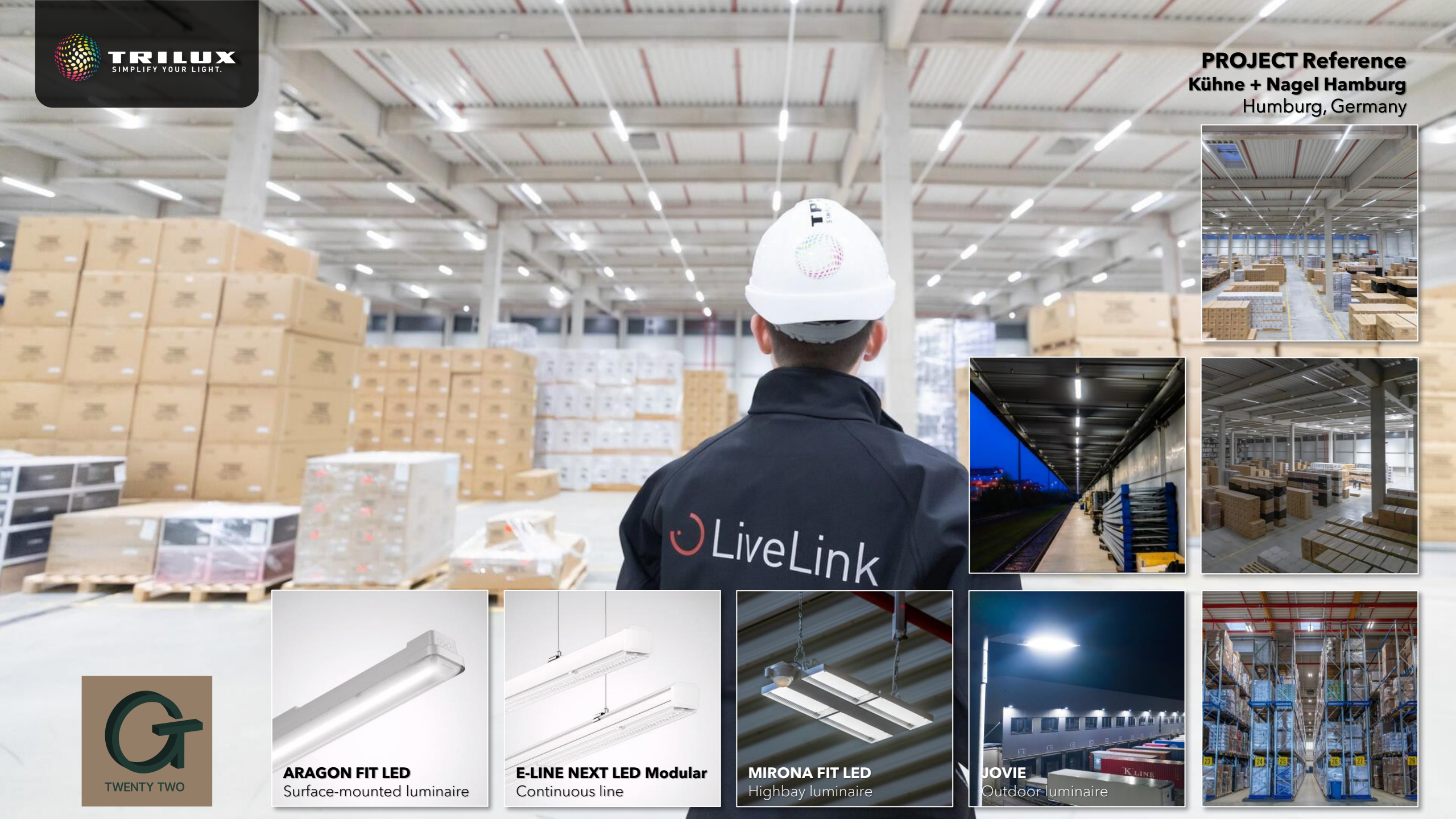
PALA
alpitour



CONSTELA



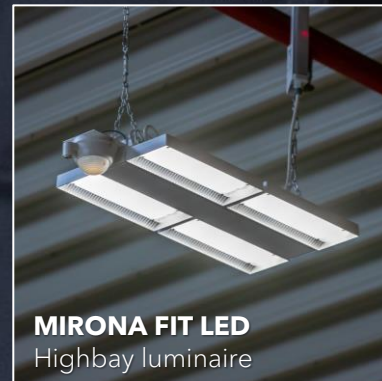




ARAGON FIT LED
Surface-mounted luminaire



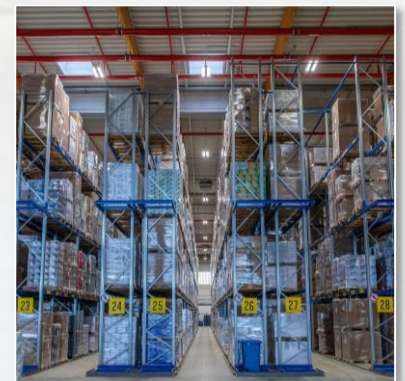
E-LINE NEXT LED Modular
Continuous line

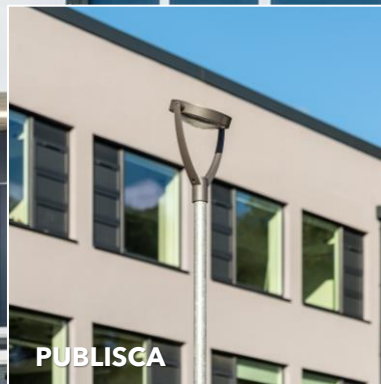


MIRONA FIT LED
Highbay luminaire



JOVIE
Outdoor luminaire









TWENTY TWO

simon



TRILUX
SIMPLIFY YOUR LIGHT.

SMART
LiFE | LiVE

เอส
จีที

ทเวนตีทู